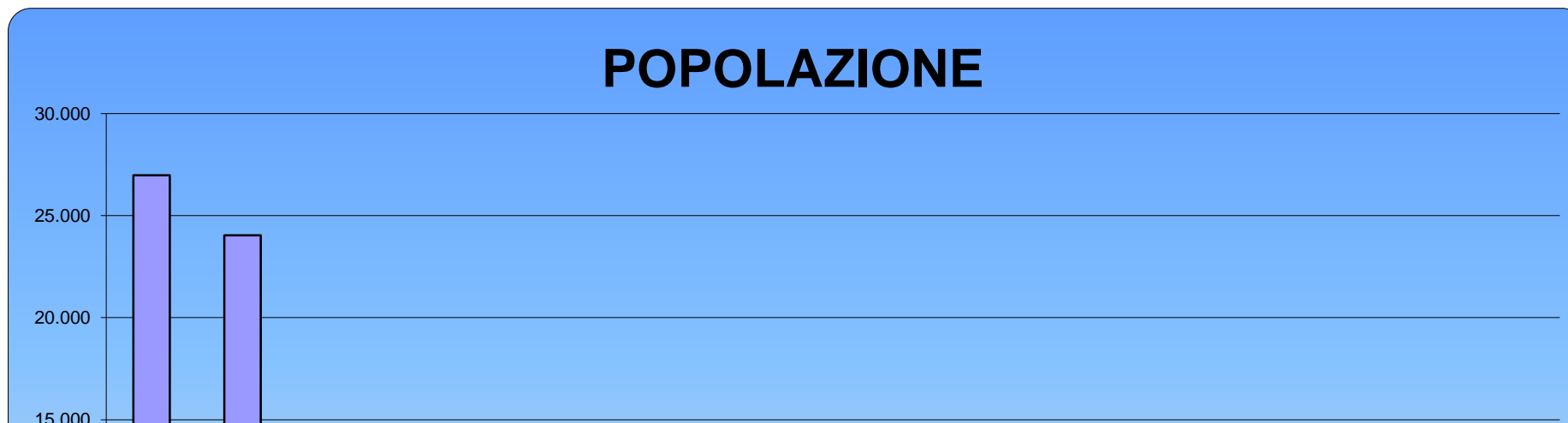
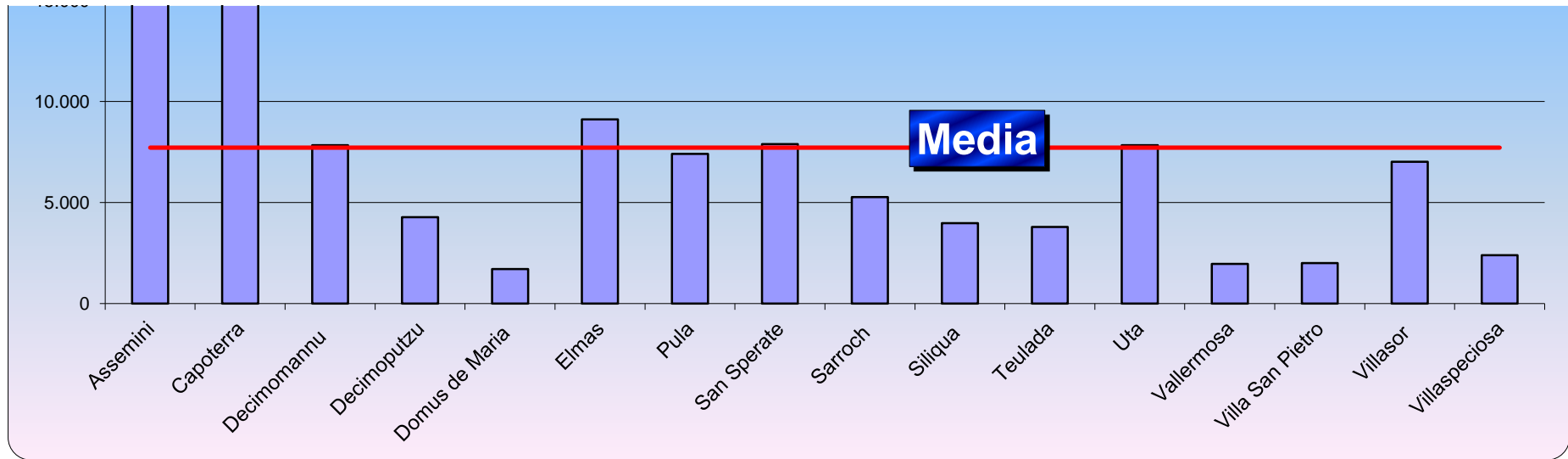


Con Assemini

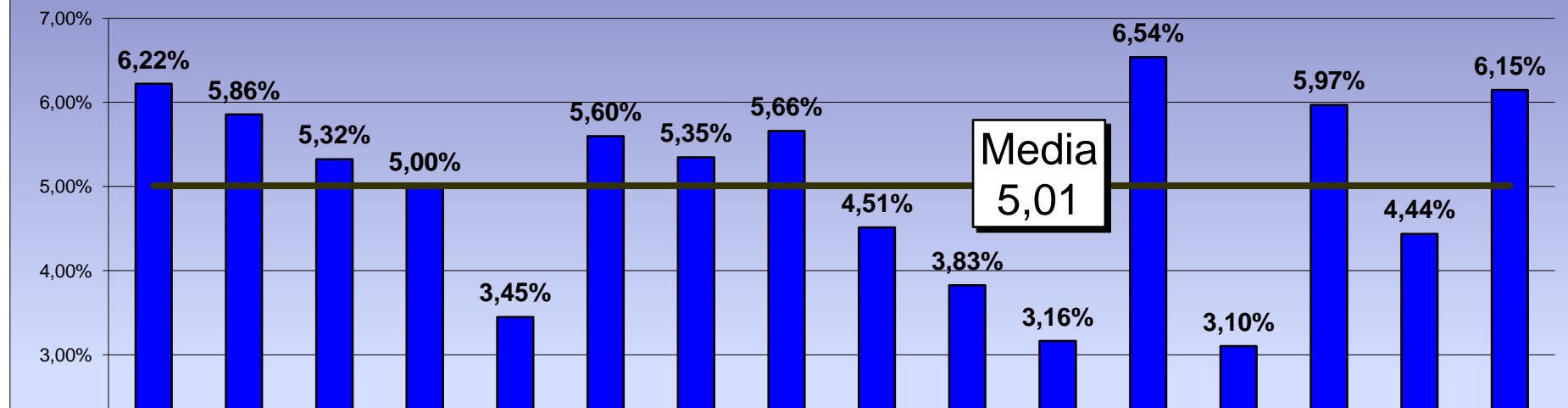
comune	popolazione	crescita	0-1	1 2	2 3	totale	posti	% 0-3 su popolazione	presenze	lista d'attesa	tasso di riempimento	copertura rispetto la popolazione 0-3
Assemini	26.979	12,5	581	553	544	1678	295	6,22%	147	12	49,83%	17,58%
Capoterra	24.030	12,3	441	481	485	1407	124	5,86%	124	0	100,00%	8,81%
Decimomannu	7.833	14,6	141	137	139	417	60	5,32%	55		91,67%	14,39%
Decimoputzu	4.278	6,3	75	71	68	214	20	5,00%	20		100,00%	9,35%
Domus de Maria	1.711	10,7	26	18	15	59	0	3,45%	0		0,00%	0,00%
Elmas	9.112	14,9	165	172	173	510	68	5,60%	68	0	100,00%	13,33%
Pula	7.405	13,3	118	137	141	396	56	5,35%	40	0	71,43%	14,14%
San Sperate	7.881	15,5	163	149	134	446	70	5,66%	70		100,00%	15,70%
Sarroch	5.273	0,6	77	84	77	238	0	4,51%	0		0,00%	0,00%
Siliqua	3.973	-4,3	49	44	59	152	34	3,83%	34		100,00%	22,37%
Teulada	3.793	-4,9	37	38	45	120	25	3,16%	25		100,00%	20,83%
Uta	7.831	17	190	170	152	512	30	6,54%	10		33,33%	5,86%
Vallermosa	1.966	-2,2	20	23	18	61	0	3,10%	0		0,00%	0,00%
Villa San Pietro	2.010	13	45	44	31	120	0	5,97%	0		0,00%	0,00%
Villasor	7.008	-0,8	103	105	103	311	34	4,44%	17		50,00%	10,93%
Villaspeciosa	2.391	22,8	38	47	62	147	25	6,15%	22	0	88,00%	17,01%
<b>PLUS</b>	<b>123.474</b>	<b>8,83125</b>	<b>2269</b>	<b>2273</b>	<b>2246</b>	<b>6788</b>	<b>841</b>		<b>632</b>	<b>12</b>	<b>75,15</b>	<b>12,39%</b>
<b>Medie ►</b>								<b>5,01%</b>		<b>0,62</b>	<b>61,52%</b>	<b>10,64%</b>



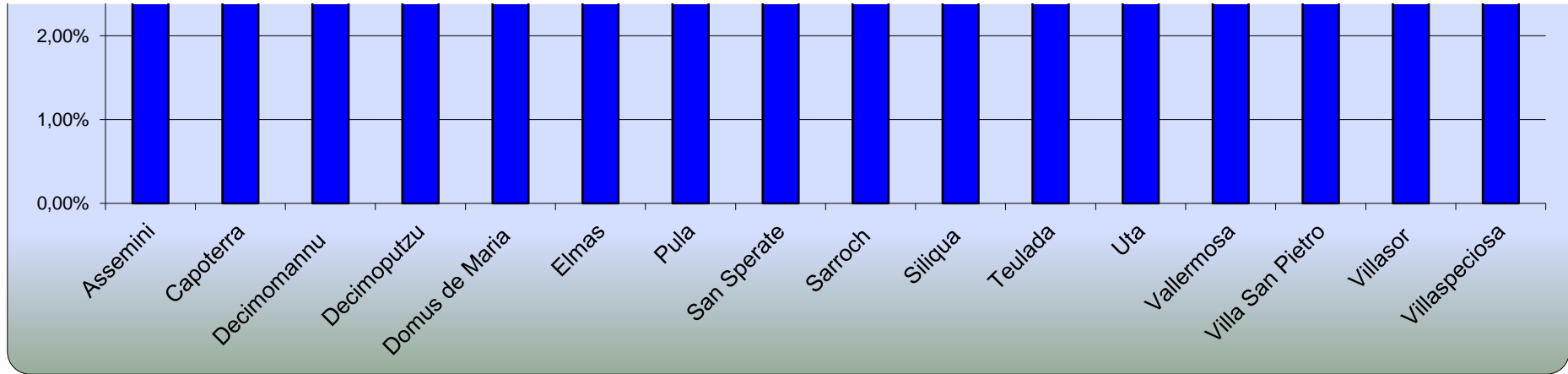
Con Assemini



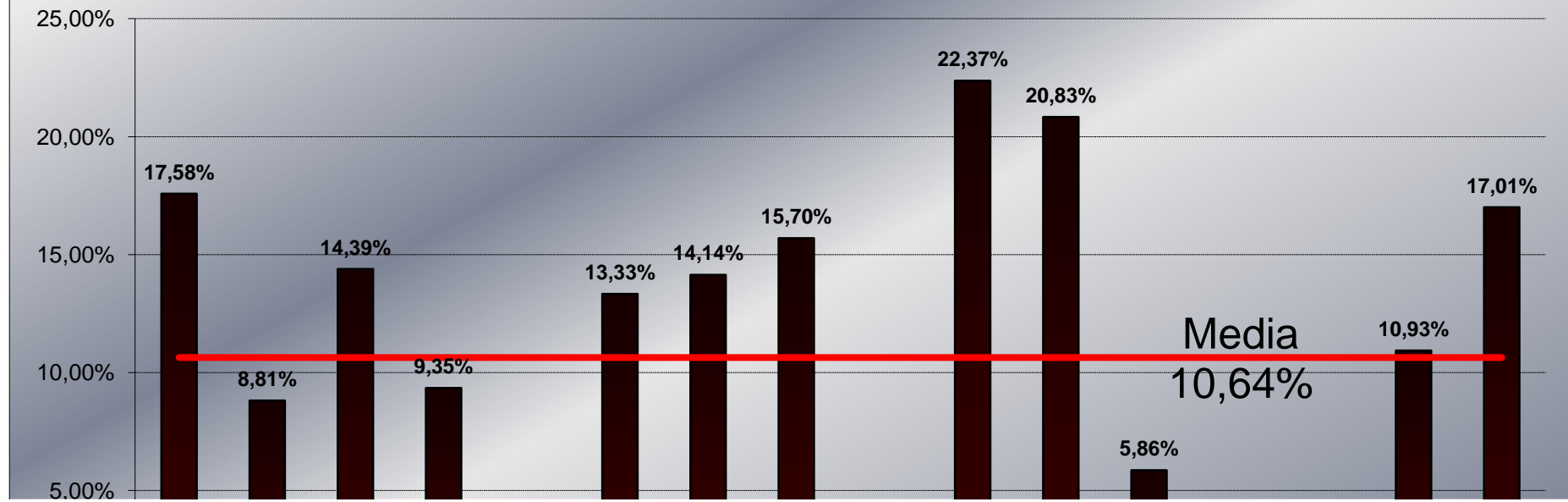
### percentuale di minori da 0 a 3 anni sulla popolazione

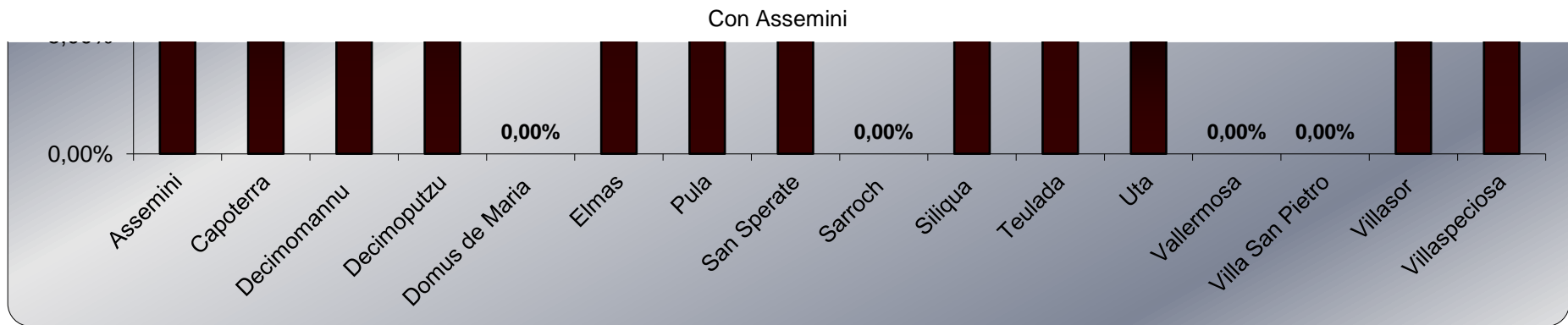


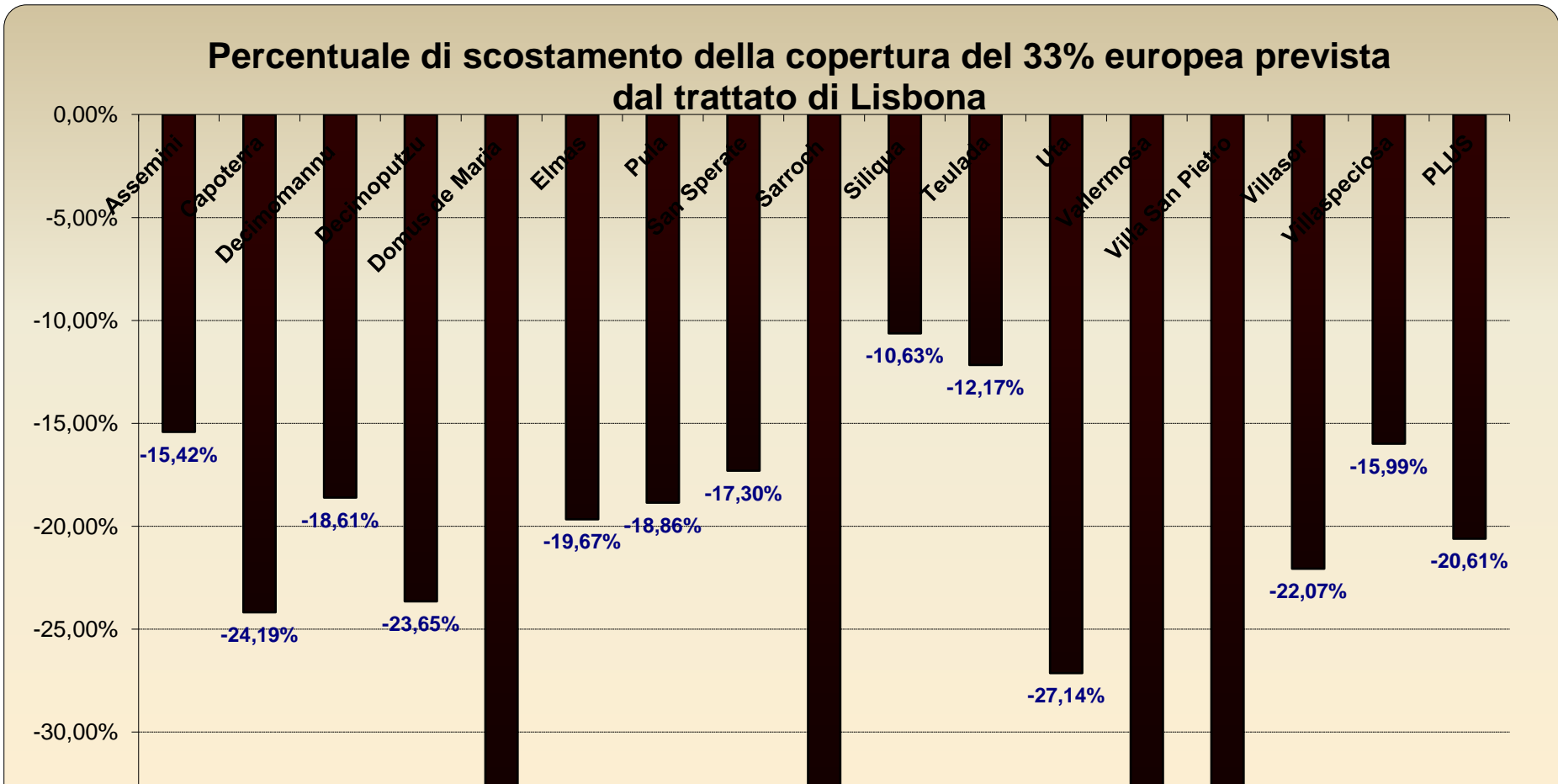
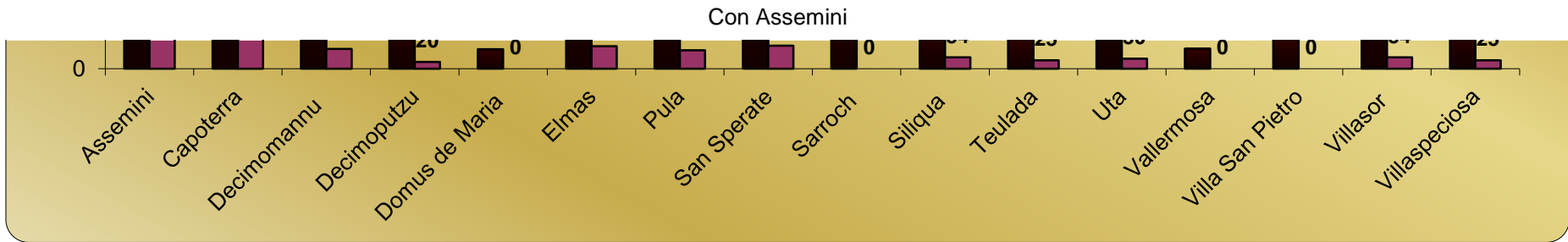
Con Assemini



## Copertura rispetto alla fascia 0-3 anni







Con Assemini

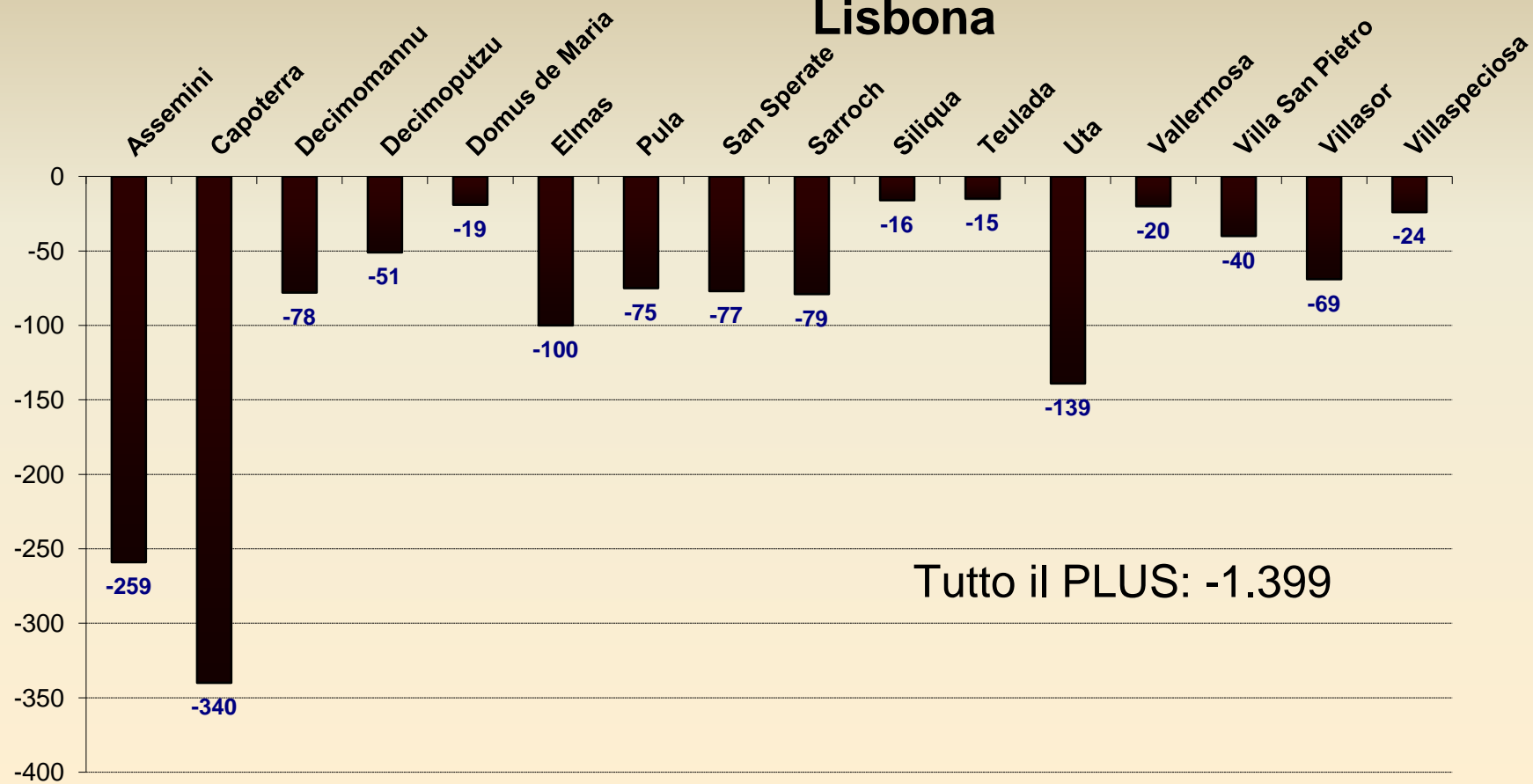
-35,00%

-33,00%

-33,00%

-33,00% -33,00%

## Valori di scostamento della copertura del 33% trattato di Lisbona





Con Assemini

media popolazione

7.717  
7.717  
7.717  
7.717  
7.717  
7.717  
7.717  
7.717  
7.717  
7.717  
7.717  
7.717  
7.717  
7.717  
7.717  
7.717

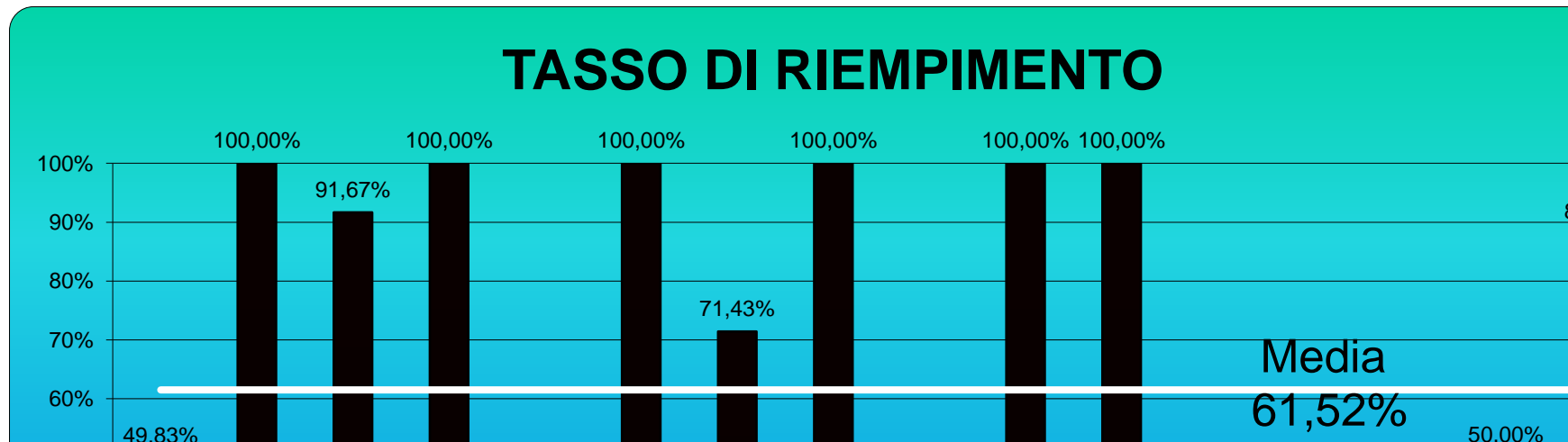
media tasso di riempimento  
61,52%  
61,52%  
61,52%  
61,52%  
61,52%  
61,52%  
61,52%  
61,52%  
61,52%  
61,52%  
61,52%  
61,52%  
61,52%  
61,52%  
61,52%  
61,52%

media di colonna l  
5,01%  
5,01%  
5,01%  
5,01%  
5,01%  
5,01%  
5,01%  
5,01%  
5,01%  
5,01%  
5,01%  
5,01%  
5,01%  
5,01%  
5,01%  
5,01%

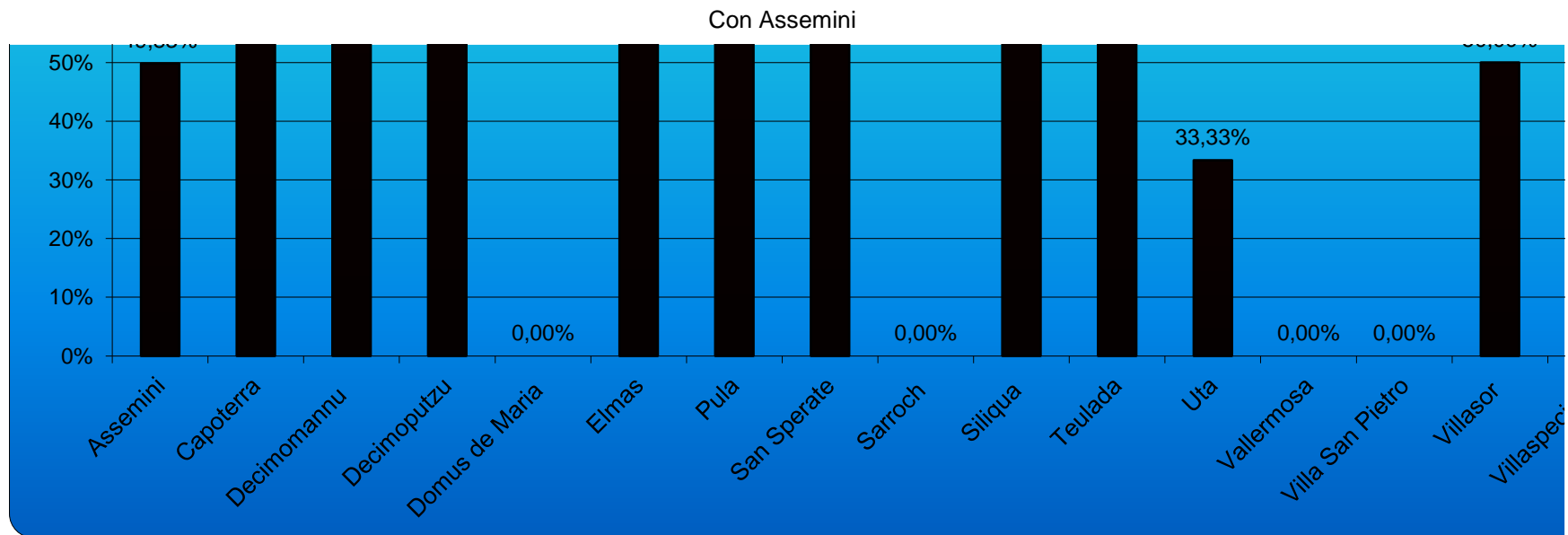
media copertura  
10,64%  
10,64%  
10,64%  
10,64%  
10,64%  
10,64%  
10,64%  
10,64%  
10,64%  
10,64%  
10,64%  
10,64%  
10,64%  
10,64%  
10,64%  
10,64%

fabbisogno
1383
1283
357
194
59
442
340
376
238
118
95
482
61
120
277
122
<b>242,818182</b>

scostam copertura dal 33%	scostam copertura dal 33% - valore
-15,42%	-259
-24,19%	-340
-18,61%	-78
-23,65%	-51
-33,00%	-19
-19,67%	-100
-18,86%	-75
-17,30%	-77
-33,00%	-79
-10,63%	-16
-12,17%	-15
-27,14%	-139
-33,00%	-20
-33,00%	-40
-22,07%	-69
-15,99%	-24
-20,61%	-1399







Con Assemini

Con Assemini

comune per comune il fabbisogho		
num bamb	copertura	scoperto

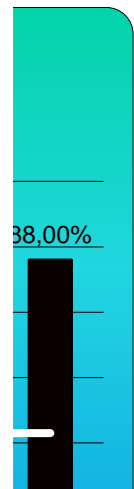
Con Assemini

quanto discostano dal 33% i diversi comuni, il plus, in numero assoluto e percentuali.

Con Assemini

Con Assemini

Con Assemini



Con Assemini

